

EMPIRE & CO.

Salone del Mobile Trend Report

JUNE 2026



E.

A Matter of Salone

Welcome to our Salone Del Mobile 2026 Trend Report, where we showcase all of the trends and products we were inspired by in Milan.

01 Trends

MATERIALS
CURVES
SCALE
COLORS

EMPIRE & CO.

02 Our Top 10

OUR FAVORITE PRODUCTS



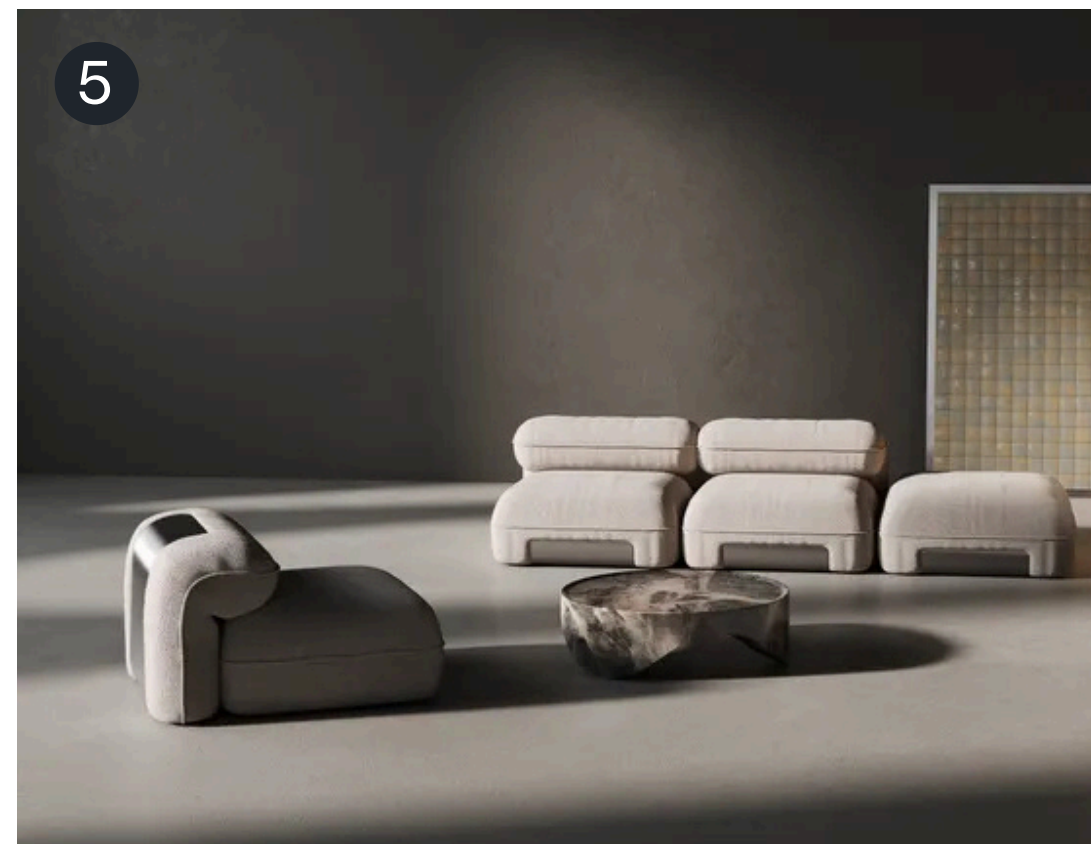
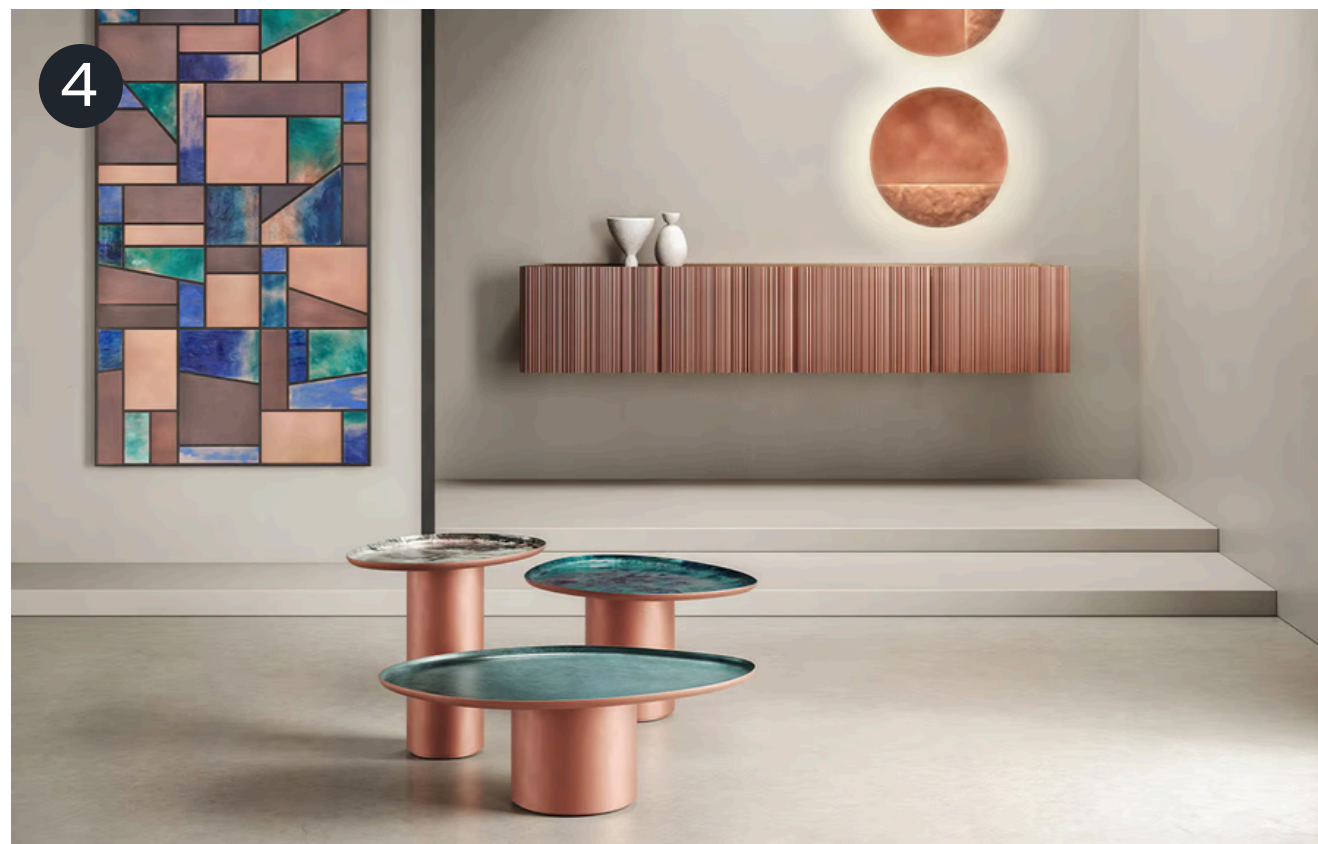
Material Matters: Metallic Presence

Metallic finishes had a strong presence throughout the show, appearing across furniture, tables, accents, and larger architectural applications. Rather than feeling overly industrial, metals were used in a more refined and intentional way, bringing a clean, modern edge while adding depth and visual contrast to softer surrounding materials.

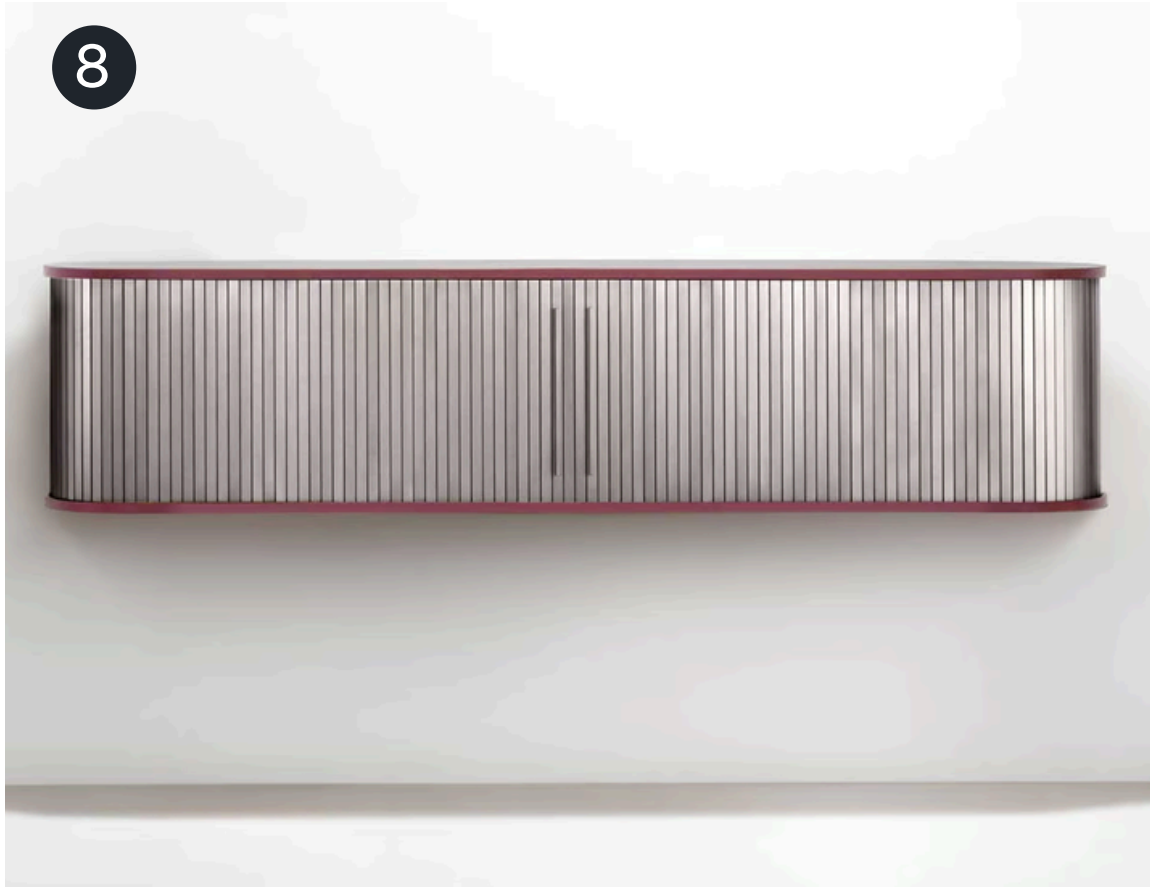
The continued use of metal also reinforces a broader focus on authenticity and material-driven design, highlighting materials for their inherent qualities rather than disguising or over-finishing them. As spaces continue to prioritize tactile experiences and lasting design, metallic elements are evolving beyond accents and becoming statement features within the overall environment.



MATERIAL MATTERS: METALLIC PRESENCE



1. KRIPTONITE - K1+ Modular
2. ZIETA - G-Console
3. TONELLI DESIGN - Naked Armchair
4. DECASTELLI - Canneto
5. ENNE - Lien Bench



- 6. ZIETA - Rondo Wall Mirror
- 7. PORRO - Ferro
- 8. DECASTELLI - Saracena
- 9. BONALDO - Amour
- 10. ONDARETTA - Tam Inox

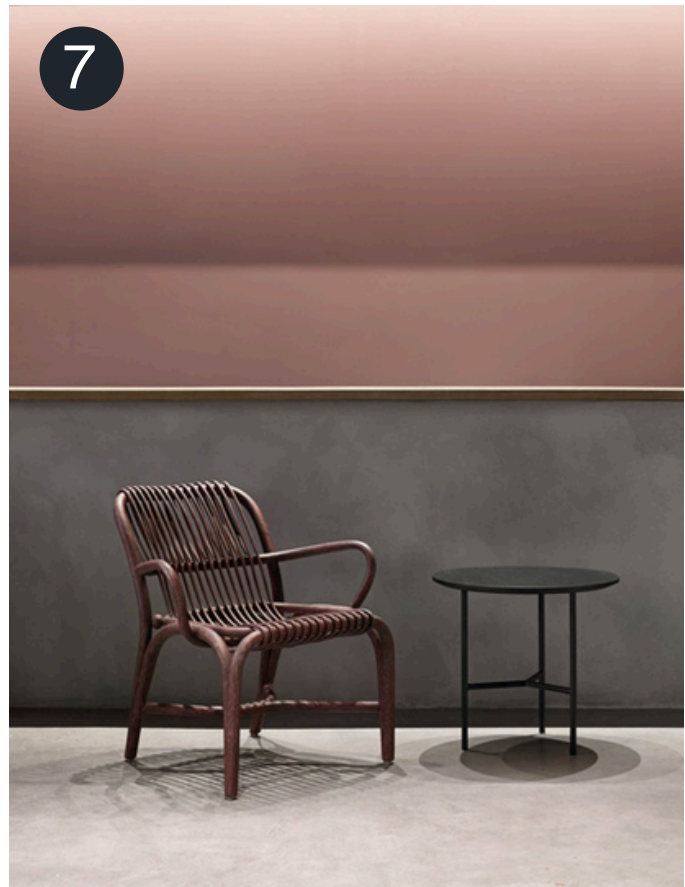
Material Matters: Natural Foundations

Wood continued to play a major role throughout the show, bringing warmth, depth, and a strong sense of authenticity into spaces. Natural wood tones and visible grain patterns were celebrated rather than concealed, reinforcing a broader shift toward honest, material-driven design.

From rich, darker finishes to lighter and more organic tones, wood appeared across casegoods, tables, chairs, and desks, often adding balance alongside metal and stone elements. As design continues to move toward environments that feel more human and tactile, wood remains a timeless material that brings both comfort and permanence while adding character through its natural variation and texture.



MATERIAL MATTERS: NATURAL FOUNDATIONS



- 1. PORADA - Flavio
- 2. WEWOOD - Nook
- 3. TALENTI - Itaca
- 4. PLANK - SOL
- 5. KETTAL - Kall
- 6. TACCHINI - Artona
- 7. EXPORMIM - Fontal Armchair
- 8. TACCHINI - Basilan

Material Matters: Stone Statements

Stone and marble felt less like supporting materials and more like design features in their own right. Across showrooms, bold veining, layered textures, and sculptural applications transformed surfaces into focal points, adding visual weight and character to a space.

Coffee tables, consoles, and statement pieces often highlighted the natural movement within the material itself, embracing unique patterns rather than uniformity. There was also a noticeable balance between polished and more organic finishes, allowing stone to feel both elevated and approachable.



MATERIAL MATTERS: STONE STATEMENTS



- 1. POTOCCO - E Claire
- 2. NOMON - E Claire
- 3. MONITILLO - 1980
- 4. GALOTTI & RADICE - Haumea
- 5. GALOTTI & RADICE - Ri-Giro
- 6. PORADA - Amphora
- 7. WEWOOD - Kaya

Curated Curves

Soft, rounded silhouettes remained a defining visual language across many of the spaces and products on display. These forms were frequently paired with cooler, more structured materials such as metal, stone, and glass, creating a compelling balance between softness and strength.

Curved sofas, rounded tables, and sculptural seating introduced a sense of comfort and approachability while maintaining a refined, modern feel. Rather than feeling overly playful, these forms felt intentional and grounded, adding movement and visual ease while helping soften the presence of more industrial material applications.



CURATED CURVES



- 1. BLLARD TOULET - Blacklight Billiard
- 2. MOGG - Binaria
- 3. VONDOM - Luna Sofa
- 4. EXTETA - Modernista
- 5. MINIFORMS - Mastea
- 6. WEWOOD - Carousel
- 7. GALOTTI & RADICE - Half Pipe
- 7. CARACOLE - Gelee

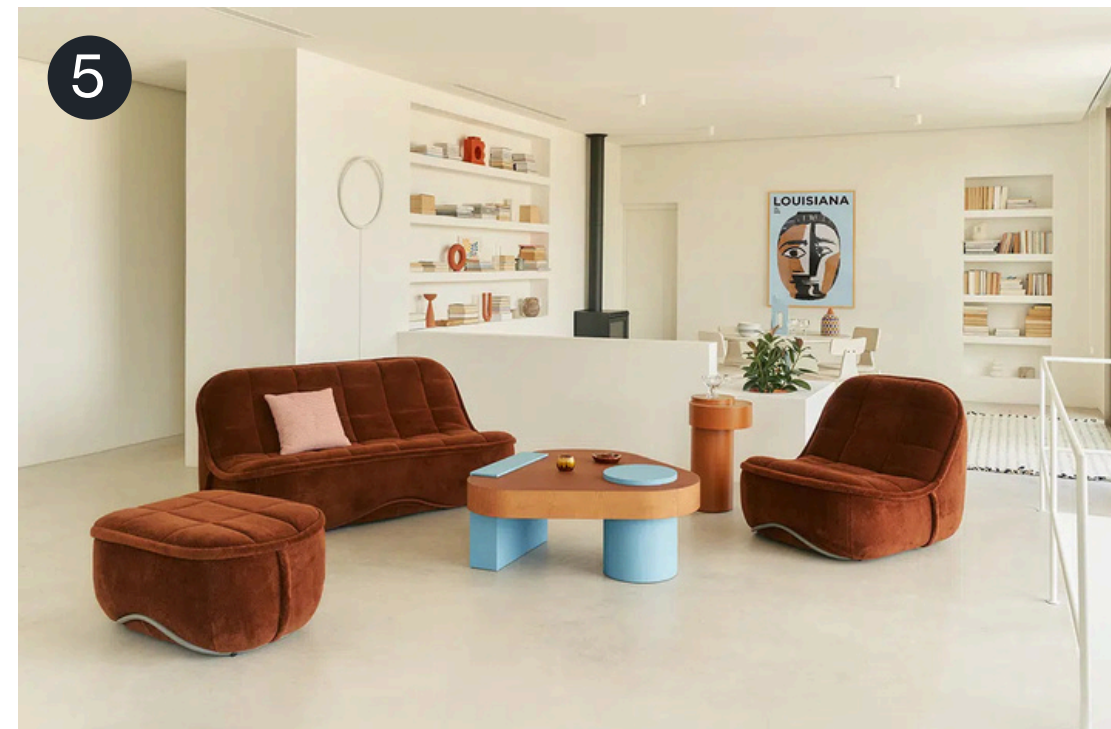
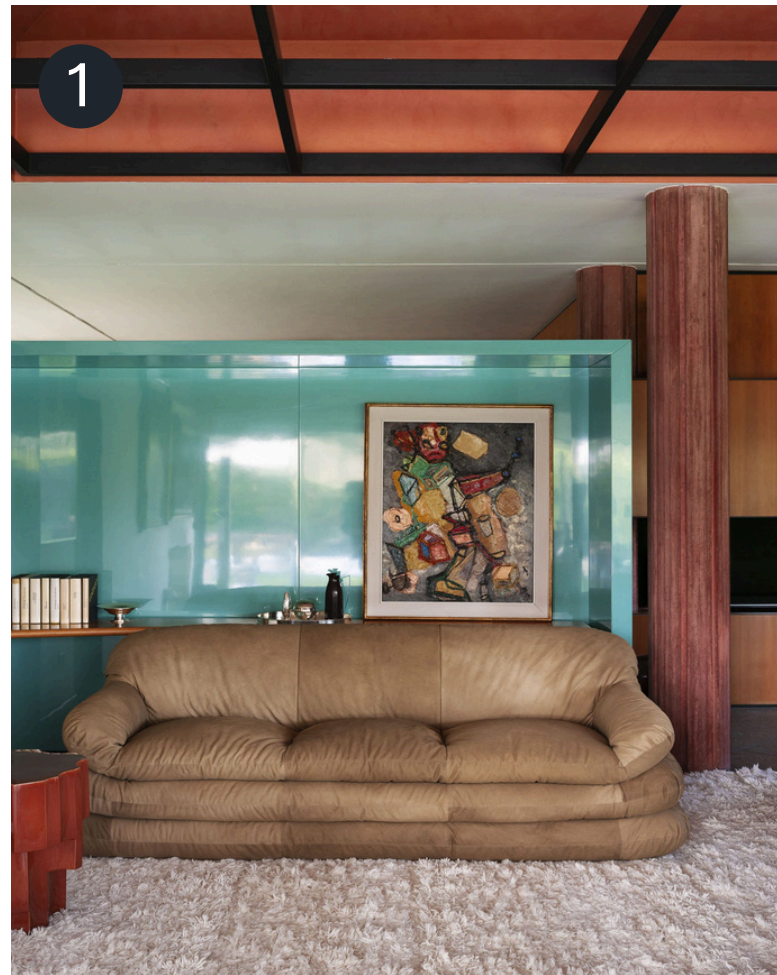
The Power of Scale

Scale played a major role in shaping the overall feel of many spaces, with larger, more substantial furniture pieces creating a stronger sense of presence. Oversized sofas, deep armchairs, and chunky coffee tables appeared throughout showrooms.

Rather than prioritizing minimal or lightweight forms, many designs leaned into fuller proportions and more grounded silhouettes. These larger-scale pieces helped create spaces that felt layered, inviting, and intentionally designed around experience, reinforcing a shift toward environments that emphasize comfort, warmth, and a stronger sense of place.



THE POWER OF SCALE



- 1. TACCHINI - Solar XL
- 2. B&B Italia - Tufty-Time Modular Sofa
- 3. CASSINA - Moncloud
- 4. SANCAL - Pion
- 5. SANCAL - Vibe



- 6. SANCAL - Twins
- 7. MOGG - Alba
- 8. CARACOLE - Home
- 9. VIBIEFFE - Isola
- 10. FORMARKIVET - Cubio

Earthy Expressions

Color direction continued to build on themes that have been gaining momentum over the past years. Earthy tones remained prominent, with rich browns, warm burgundy shades, mustard tones, and layered greens appearing across furniture, textiles, and finishes. Rather than relying on bright statement colors, these tones worked together to create depth and richness.



1



2



3

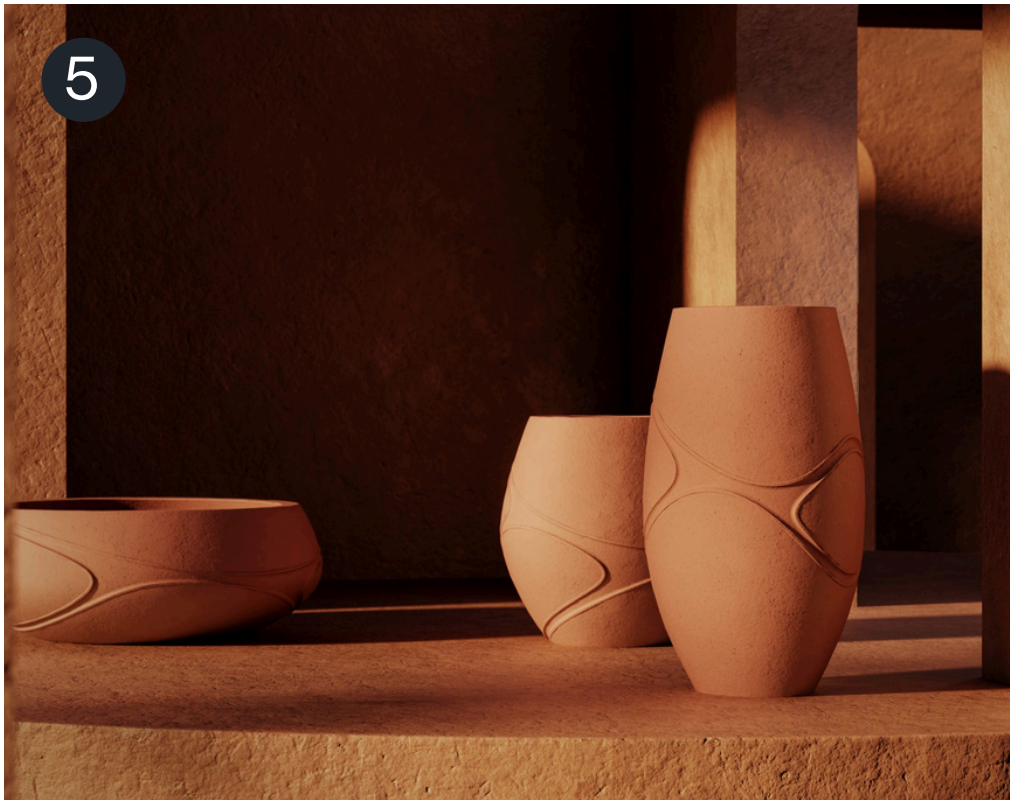


4



- 1. CASSINA - Hotte
- 2. MARELLI - Pierre Bookshelf
- 3. BONALDO - Amour
- 4. MOGG - Jeffa
- 5. MORHO - Argila Planters
- 6. CASSINA - Peacock
- 7. TACCHINI - Le Mura Armchair

5



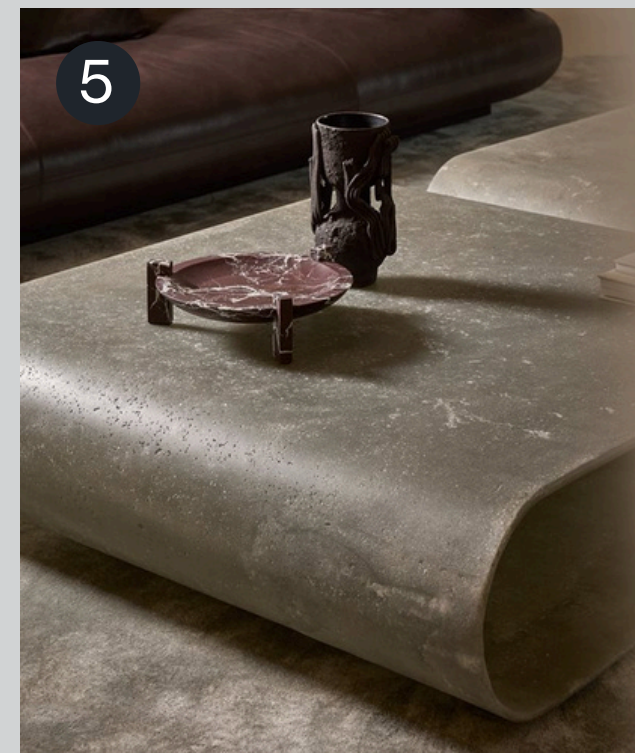
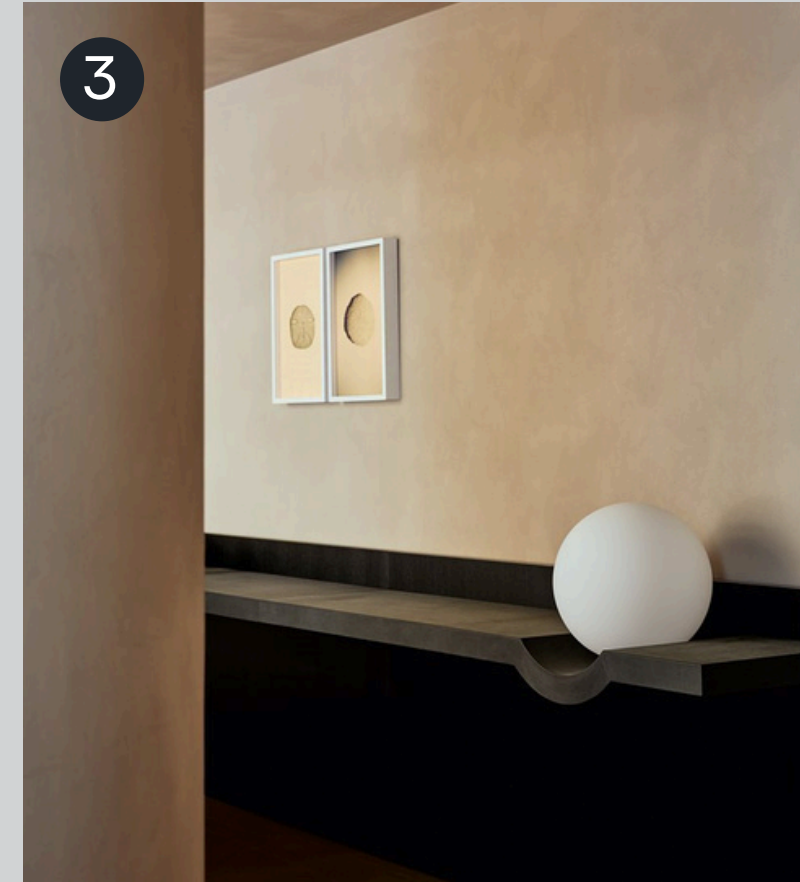
6



7



Top 10 Products



- 1. CASSINA - Ardys Armchair
- 2. KETTAL - U-Type
- 3. GALLOTTI & RADICE - Stresa
- 4. PORADA - Mary
- 5. GALLOTTI & RADICE - Ri-Giro



- 6. ARTE VENEZIANA - Melt
- 7. MINIFORMS - Caruso
- 8. CASSINA - Wax, Stone, Light
- 9. FAS PENDEZZA - Shadow
- 10. SANCAL - Mimoso

Thank You.

NEW YORK | ATLANTA | BALTIMORE
DURHAM | FT. LAUDERDALE | MIAMI | ORLANDO | TAMPA

INFO@EMPIREANDCO.COM | EMPIREANDCO.COM

